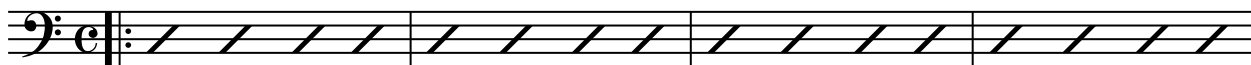


Closer Walk; Saints; Amazing

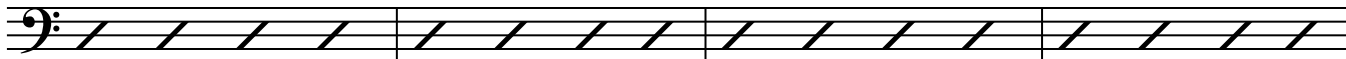
1: CLOSER

C C Dm7 G7

Electric Bass



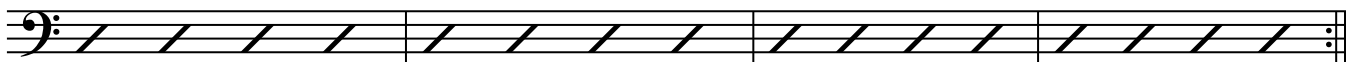
5 Dm7 G7 C F C G7



9 C7 C7 F D



13 G A Dm7 G7 C F C G7

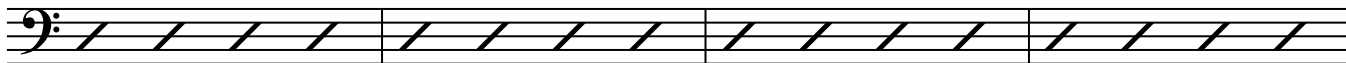


2: SAINTS

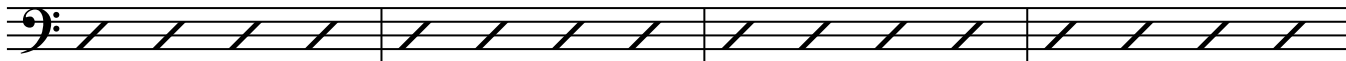
17 F C11 F C11



21 F D7 Gm7 C11



25 F $\frac{F7}{A}$ B \flat 7 B $^{\circ}$



29 C11 Dm Gm C11 F B7 C11



Closer Walk; Saints: Amazing Grace

3: AMAZING

D A11 D7 G7 D C#m F#13

Bass staff with notes and slurs for measures 33-36.

B m E7 A11 A11

Bass staff with slurs for measures 37-40.

D D7 G7 G#°

Bass staff with slurs for measures 41-44.

A11 B m Em7 A11 D7 G7 A11

Bass staff with notes and slurs for measures 45-48.

Bass staff with rests for measures 49-52.

Bass staff with rests for measures 53-56.

Bass staff with rests for measures 57-60.

Bass staff with rests for measures 61-64.